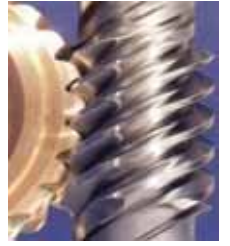


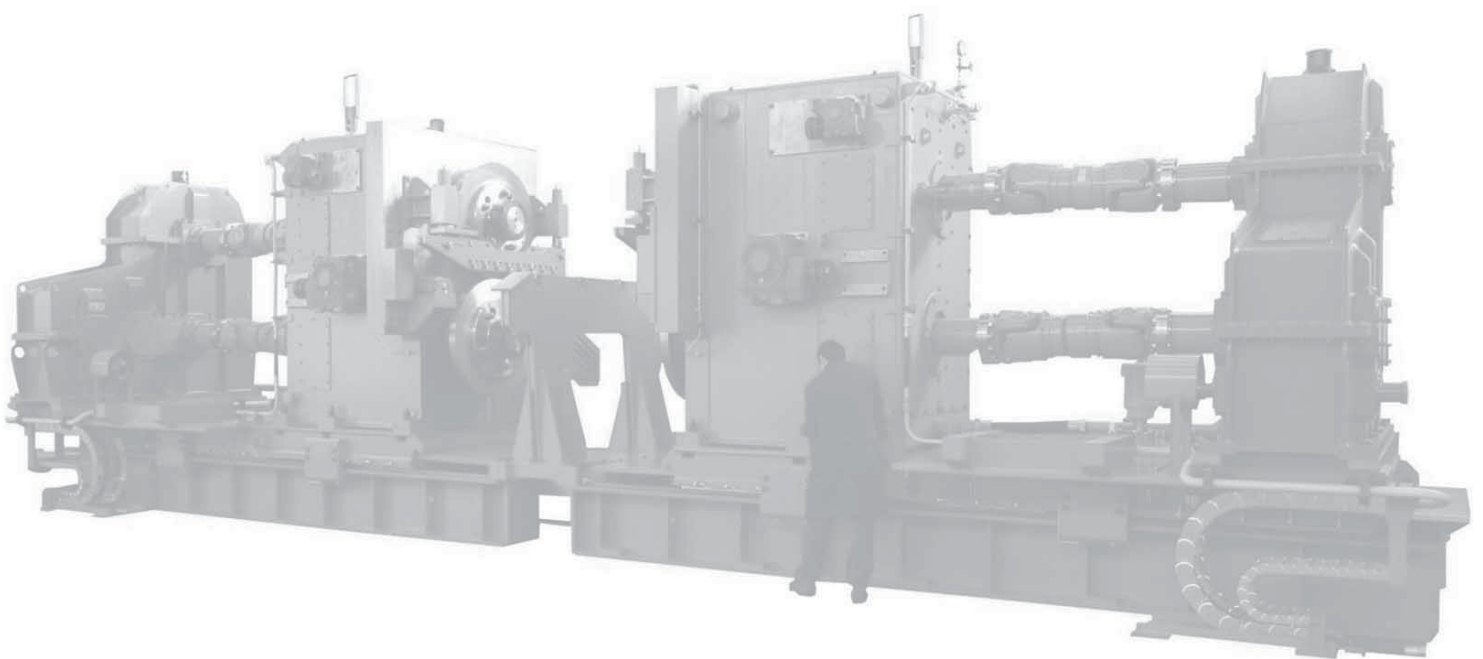
# MÜLLER & STAHL

EXPEDITING - BÜRO S.R.L.



Today the concepts **"Time is money"** and **"A satisfied customer means more orders"** are more important than ever.

Since there are a lot of companies from the industrial field which are producing their goods abroad, the pressure of deadlines and quality work grows more and more important.



[www.mueller-stahl.com](http://www.mueller-stahl.com)

**...is a world wide service company with different offers:**

- Supervision of quality
- Supervision of meetings/ deadlines
- Supervision of production
- Supervision of site installation
- Project Management
- Non - destructive examination

## **Reasons for Expediting**

Therefore, by regularly checking that the deadlines and the quality standards are being met, one can spot any delay or quality shortcoming at an early stage. We will be working for you on-site and we will be helping you both with the preparations and with the analysis. Due to our experience and on-time inspections

- the percentage of consignments delivered on time has increased by 20%
- and due to our regular up-to-date reports you are given a chance to take any measures you may consider necessary in case of delays or quality shortcomings
- there is a considerable increase in the quality standards

## **To expedite = to speed up, to be beneficial**

Our range of services create a link between you and your suppliers or customers.

### **According to this we can offer the following services:**

- Turning any inspection requests in inspection plans
- Supervision for meetings and/or shortening the deadlines for the orders from your suppliers
- Regular and rapid reports for you regarding to the status of your order
- Error tracking and recording of all errors occurred
- Proposed solutions for schedule variances and variations in quality
- Acquisition of quality records
- Creation of the final documentations
- Time scheduling and supervising the projects
- Continuous support of all orders from placing until delivering
- Quality surveillance and assessment
- Assistance to training according to (DIN EN ISO 9000)
- Assistance for the assessment and selection of suppliers
- Local end customer support

### **Other offers:**

- Supervision of site installation
- Planning the site installation
- Development of installations, public relations
- Non-destructive examination of welded connections and material
  - Ultrasonic testing
  - Magnetic particle testing
  - Dye penetrant testing





## The advantages you get by supervising deadlines and quality control

- **Punctuality** = observance of the delivery dates
- **Quality** = better quality results
- **Information** = on-time information in case of delays
- **Contractual penalties** = prevention or reduction of penalties
- **Transparency** = permanent information about the status of production
- **Planning safety** = using the production or the installation at their full capacity
- **Choosing the suppliers** = consultancy in choosing the suppliers

Due to early reports and inspections actions can be initiated to reduce and prevent delays and quality shortcomings.

### Possibilities for the purchaser:

- Replanning the production and the installation steps
- Replanning the site works
- Planning the extra work
- Increasing the number of staff
- Any extra costs will be passed on to the suppliers (Claiming)

### Possibilities for the supplier:

- Consequent dunning
- Intensified expediting
- Intervention of the management
- Claiming
- A higher employment of staff etc.



## Our methods and approaches

We implement expediting for your suppliers! Here we present our methods, inspections and reports.

**Our claim: Today's inspections will be today's reports!**

### Methods

1. Inspection visits
2. Settlement of the project at the suppliers
3. Continuous supervision
4. Status requests (via telephone, fax, e-mail etc.)
5. Photographic documentation
6. Meetings (at the employer, at the supplier)

### Inspections

1. of the planning processes
2. of the material sourcings
3. of the production plannings
4. Inspections of the status of production (deadlines and quality)
  - of receiving materials
  - of dressing shops (firing, sawing, boring)
  - of crimp and welding productions
  - of machining
  - of assembling
  - of hydraulic and greasing equipment
  - of electrical equipment
  - of coating and transport preparation
5. (complete, punctual, accurate)
  - tagging, packing, dispatching

### Reports

The expeditor provides you with reports of all results of the expediting by means of:

1. Photographic evidence of the progress of the activities
2. Over-all views of the projects
3. Deadline schedules with the present status
4. Quality plans
5. Error reports:
  - Quality errors
  - Production errors
  - Drawing errors
  - Errors in the list of items
6. Assessing the Suppliers

All information will be sent to you immediately after the inspection (by phone).

You may be provided with further reports according to our agreement.

The following four reporting principles are used:

1. Limiting results to clear facts
2. Objective, professional and realistic presentation of the situation
3. Specific suggestions for deadline shift
4. Specific suggestions for quality shortcomings

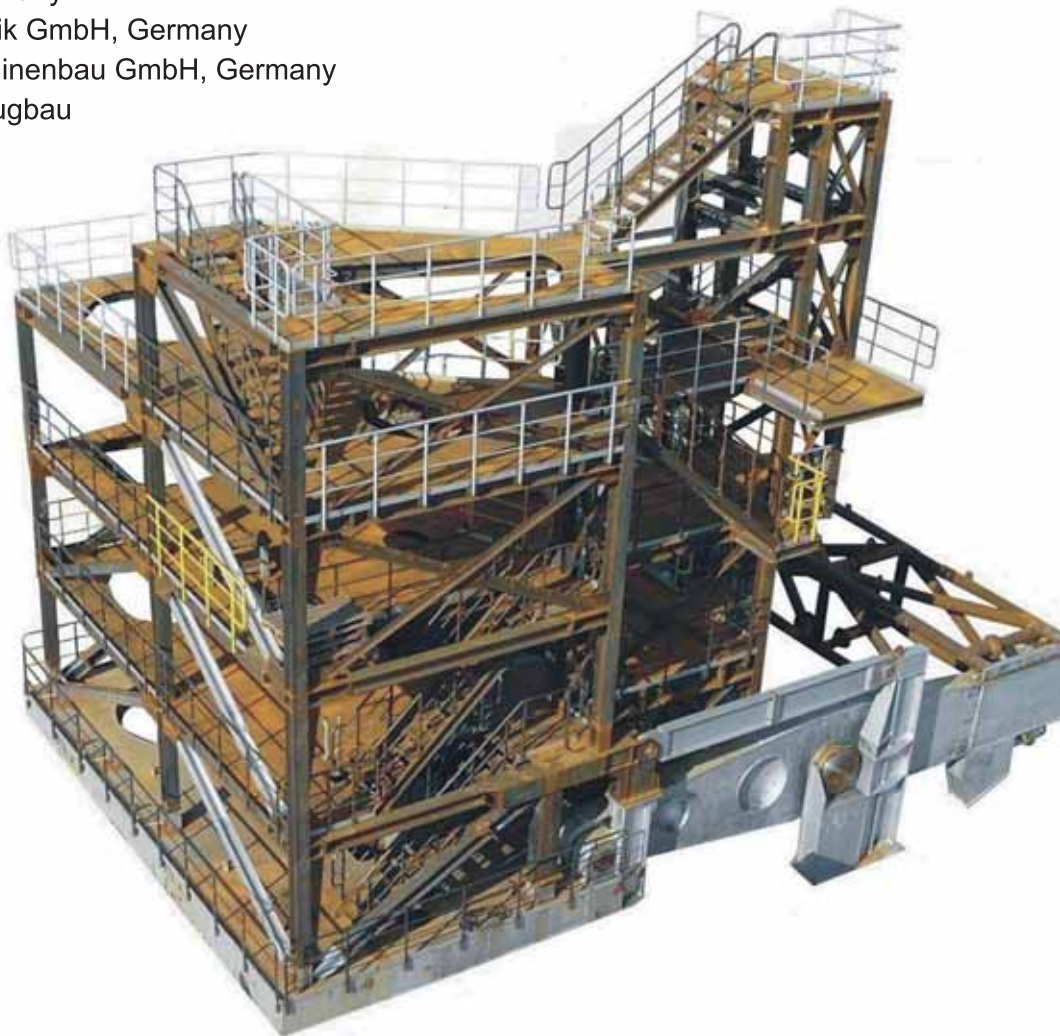


## Referenzen

The **Müller & Stahl** company is a greatly appreciated partner of national and international industrial concerns. In close collaboration with our customers we develop customised solutions to deadline monitoring, production control and assembly monitoring: From single components to complete plants.

### The following companies are our customers:

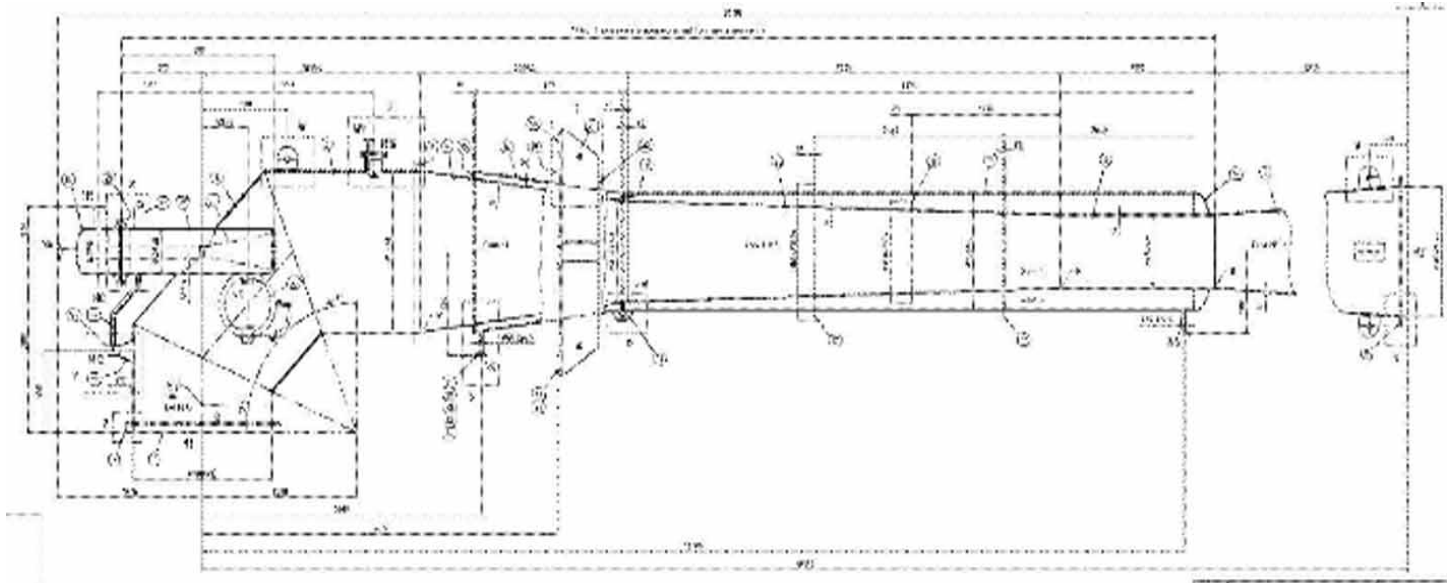
- SMS Siemag AG Hilchenbach, Germany
- SMS Siemag AG Düsseldorf, Germany
- SMS Siemag AG Hilden, Germany
- SMS Siemag AG Netphen, Germany
- SMS Siemag Process Technologies GmbH, Austria
- SMS Siemag INNSE S.p.A., Italy
- SMS Meer GmbH, Germany
- SMS Mevac GmbH, Germany
- SIEMAG-Tecberg GmbH, Germany
- AUMUND Fördertechnik GmbH, Germany
- C-Technik GmbH, Germany
- DANIELI FRÖHLING GmbH & Co. KG, Germany
- DANGO & DIENENTHAL Maschinenbau GmbH, Germany
- EEW - Erndtebrücker Eisenwerke GmbH & Co. KG, Germany
- EMG Automations GmbH, Germany
- FAT Förder- und Anlagentechnik GmbH, Germany
- Harburg-Freudenberger Maschinenbau GmbH, Germany
- M+W Maschinen- und Werkzeugbau GmbH, Germany
- RAT Spezialmaschinen GmbH, Germany
- Siemens VAI Austria GmbH & Co., Austria
- TMT Tapping Measuring Technology GmbH, Germany



## Documentation: Assembly and Quality Inspections

This example shows how we keep the testing requirements, supervision of deadlines and quality control transparent and all times viewable and document.

### The Assembly:



### Documentation of Quality Inspections:

Item no.	MpA	Drawing no.	Designation	Material	A = Inspection by manufacturer B = Inspection by manufacturer and M&S								Deposit no.	Remark:	
					5.1B	5.4B	6.1B	6.5B	6.3B						
2.9.6.	1	022350 - 18 - 13 - 01	1 ASSEMBLY		5.1B	5.4B	6.1B	6.5B	6.3B					water 0.8 bar heating jacket only Z1	6.1B hold point, End inspection
2.9.6.	1	022350 - 18 - 13 - 01 - 01	1		3.3A	3.6B	3.7B	3.8B					S11		3.7B hold point
1	1	022350 - 18 - 13 - 01 - 01	Shell segment 1800x15x1201	P265 GH	1.2A	2.1B	3.2A						W4, S1, S5		penetration test
2	1	022350 - 18 - 13 - 01 - 01	Shell segment 1800x15x2402	P265 GH	1.2A	2.1B	3.2A						W4, S1, S5		penetration test
3	1	022350 - 18 - 13 - 01 - 01	Shell segment 1800x15x2031	P265 GH	1.2A	2.1B	3.2A						W4, W6, S1, S5		penetration test
4	1	022350 - 18 - 13 - 01 - 01	Cone 1770x2669	P265 GH	1.2A	2.1B	3.2A						W6, S1, S3		penetration test
5	1	022350 - 18 - 13 - 01 - 01	Cone 1102x5600	P265 GH	1.2A	2.1B	3.2A						W6, S1, S3		penetration test
6	1	022350 - 18 - 13 - 01 - 01	Pipe 800x12x2000	P265 GH	1.2A	2.1B	3.2A						W6, S1, S3		penetration test
7	1	022350 - 18 - 13 - 01 - 01	Cone 1426x5200	P265 GH	1.2A	2.1B	3.2A						W6, S1, S3		penetration test
8	1	022350 - 18 - 13 - 01 - 01	Ring 2004x1804x25	P265 GH	1.2A								W3		
Publisher			Name	Date	Signature	Checked by					Signature				
			Holger Stahl	08.01.2009	Stahl										
Revision			Name	Date	Signature	Checked by					Signature				



## Documentation: Inspection, Deposit and Scheduling

### Inspection:

In this plan the inspection numbers (e.g. 5.1B oder 6.1B) are used to set the inspection rules: In this case "5.1 Checking of colour shade and total layer thickness" or "6.1 Workshop assembly: Main dimensions". The letters A or B set the participants.



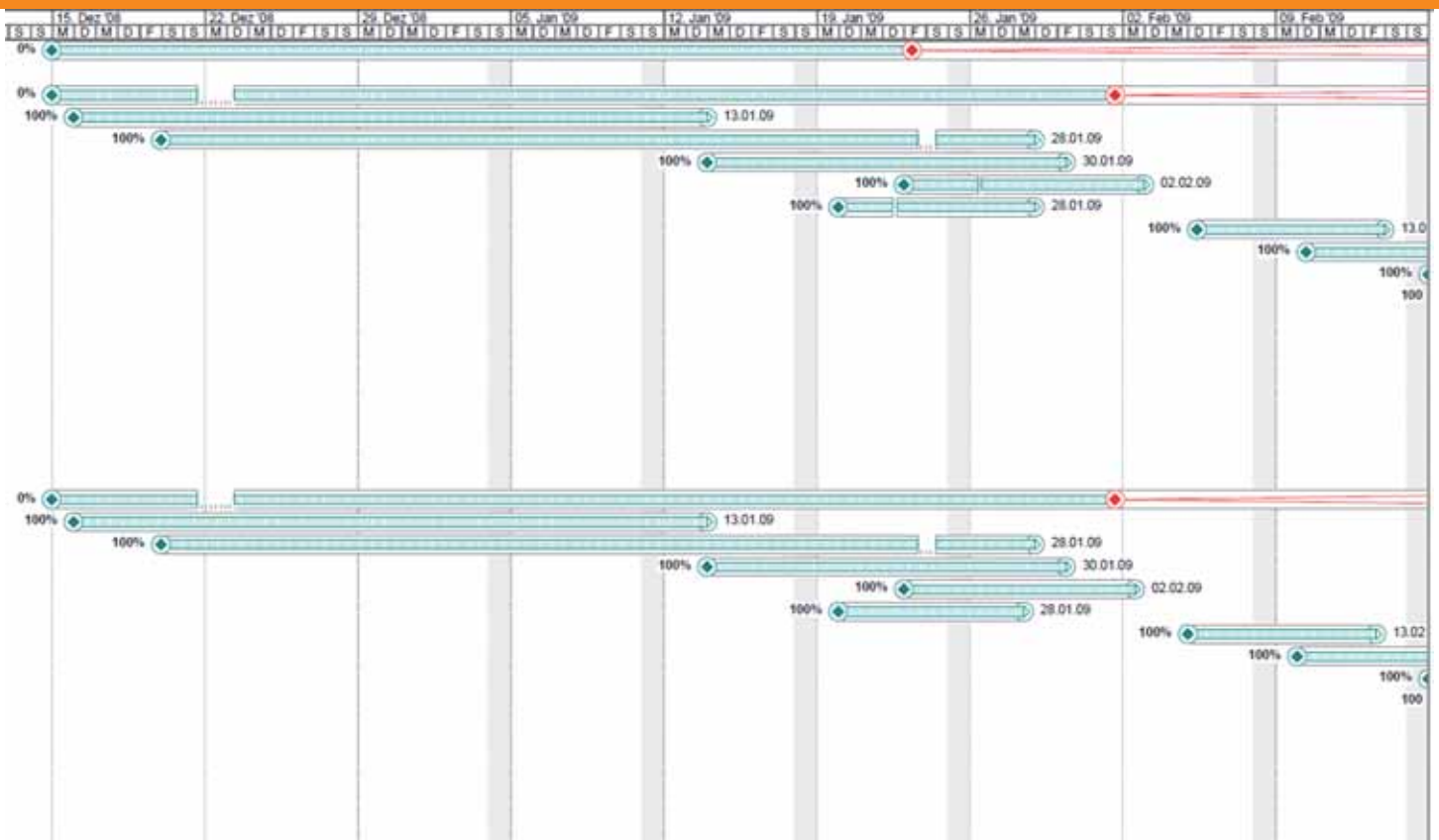
### Deposit:

Here the checking documents (e.g. Material certificates) are listed and numbered. The positions of the documents are listed in the table of contents M&S with letters.



### Scheduling

Creation of Schedules (manufacturing schedules with hold points) in cooperation with the supplier, with constant updates.



## Contact

If you are interested in our services, please contact us:

**Your contact persons are:**



### Alois Müller

machine construction technician,  
welding specialist

E-Mail: Alois.Mueller@mueller-stahl.com

Mobil: +40 (0)746147614



### Holger Stahl

industry foreman, welding specialist

E-Mail: Holger.Stahl@mueller-stahl.com

Mobil: +49 (0)17623379130

**MÜLLER  
& STAHL**  
EXPEDITING - BÜRO S.R.L.



### Müller & Stahl Expediting-Büro S.R.L.

Gheorghe Doja 12  
555200 Avrig Jud. Sibiu  
Romania

Telefon: +40(0)269206871

Telefax: +40(0)269206872

**MÜLLER  
& STAHL**  
G m b H



### Müller & Stahl GmbH

Am Eiersberg 14  
57250 Netphen  
Germany

Telefon: +49(0)27372185541

Telefax: +49(0)27372185542

[www.mueller-stahl.com](http://www.mueller-stahl.com)

